


# 2023 LEGISLATIVE AGENDA



Opportunity lives here.

 425-248-4214

 @EconAllianceSC

 EconomicAllianceSC.org

RashmaAEconomicAllianceSC.org



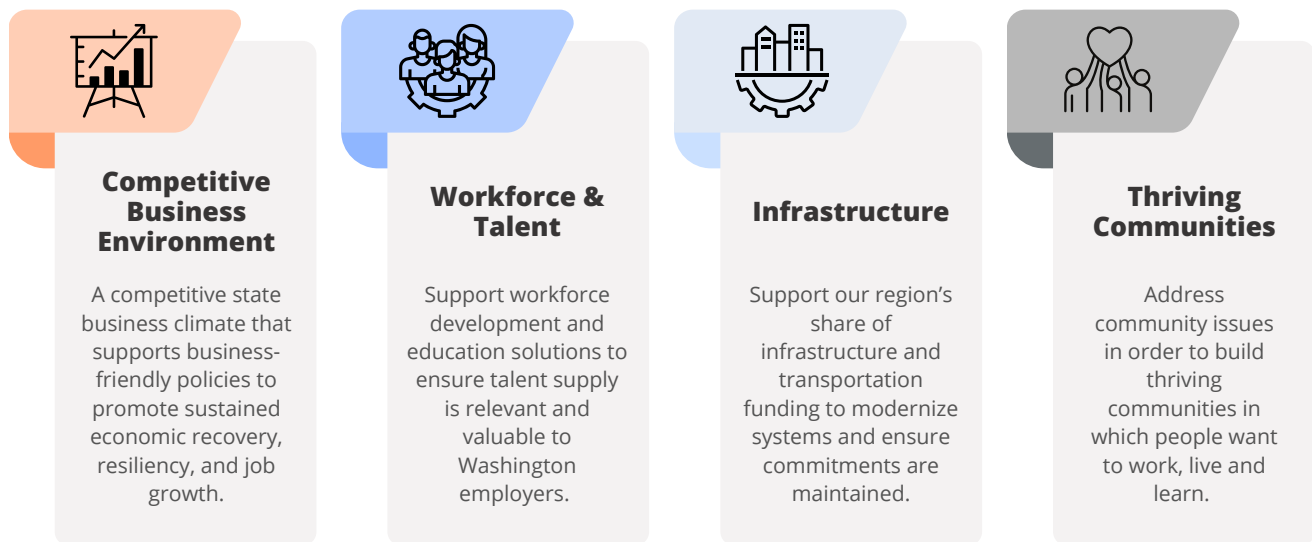
**Economic Alliance**  
SNOHOMISH COUNTY

# Legislative Agenda

As the Snohomish County regional chamber of commerce and associated development organization (ADO), the Economic Alliance of Snohomish County (EASC) brings together our businesses and community partners to advocate for a competitive business environment.

By working together across these policy areas, our collective voice is stronger. Together we will build inclusive communities in Snohomish County where people want to work, live, and enjoy a high quality of life.

For 2023, EASC asks the Legislature to partner with and act on the following priorities to ensure economic prosperity for all in Snohomish County:



## Competitive Business Environment

**A competitive state business climate that supports business-friendly policies to promote sustained economic recovery, resiliency, and job growth.**

**Taxation** – support efforts to improve and protect Washington's competitiveness and ability to attract, maintain and grow economic opportunities.

- Support efforts to improve and protect the predictability of the tax code and structural tax incentives.
- Support solutions to reduce the regulatory overload for businesses.
- Support lowering the B&O tax for manufacturing that is not limited to geographic locations in the state.
- Support the Aerospace Futures Alliance legislation allowing companies to retain a portion of the B&O tax for in-company training to enhance competitiveness.

Strengthen the **economic development ecosystem** by supporting state-level leadership to:

- Fund economic development, including business recruitment, retention and expansion programs.
- Increase funding for regional capacity through a new and ongoing funding (proposed \$10m).
- Support proposals to catalyze Innovation & Investment in Washington.

**Climate Change/Green Economy** – support legislation, programs, and funding to create jobs in the green economy, while maintaining a balanced approach that accounts for reasonable economic and regulatory considerations.

**Energy** – ensure that policies do not create unnecessary duplication, avoids unintended consequences and limits unreasonable costs.

- Support **adoption of emerging technologies** to meet growing energy needs and opportunities to increase low-carbon emitting sources of energy and energy storage to support renewable energy generation.
- Support **adoption and infrastructure funding** for EVs, renewable home energy sources and charging stations.

**Permitting** – support transparency and accountability for permit processing timelines to facilitate flexible construction practices across industries.

**Rulemaking** – support streamlining and efficiency initiatives for greater predictability and ensure that changes and proposed updates take into consideration the economic impact more broadly.

**Seaports** - invest in trade and export infrastructure to increase freight mobility and reduce supply chain challenges.

- Support electrification of transportation infrastructure.

Protect new investments in **DEI** outreach and assistance programs for equitable and inclusive statewide recovery, particularly for disadvantaged and underrepresented communities.

## **Workforce & Talent**

**Support workforce development and education solutions to ensure talent supply is relevant and valuable to Washington employers.**

Support strategies, programs and funding that offers flexibility to communities to develop and **connect with talent with opportunities** in the new workforce economy.

- Workforce Innovation Fund
- Invest in Job Skills Programs, Customized Training Apprenticeships, One-Stop WorkSource Centers and career connected learning and reskilling.
- Regional Apprenticeship Pathways (RAP) Program at Marysville School District.

**Education** – maintain investments in post-secondary education (technical colleges, colleges, community colleges and public 4-year universities) to produce highly-skilled and trades workforce.

- Support equitable access to dual credit and post-secondary pathways.
- Support investments in K-12 STEM learning to facilitate readiness for post-secondary options.
- Support investments in the K-12 curriculum that explore career pathways outside of post-secondary degrees.

**Childcare** – support legislation and solutions that address childcare capacity gaps to support working families and enable participation in the current and future workforce.

- Support strategies that look at fair and equitable pay for childcare workers and create accountability for background checks.
- Support early childhood development learning investments.

## Infrastructure

### Support our region's share of infrastructure and transportation funding to modernize systems and ensure commitments are maintained.

Ensure **infrastructure commitments** made through four statewide revenue packages, including Move Ahead Washington are honored.

- Expand state funding opportunities to assist with maintenance and operations of local infrastructure.

**Transportation** – ensure funding remains and timeline is respected in recognition of the regional importance and vast needs of Snohomish County.

- Support budget requests in Snohomish County's 2023 Regional Priority Projects list.

Collect transportation revenue in a way that is equitable and sustainable.

Preserve and maintain funds dedicated to public transit, including to support the conversion to zero emission vehicles and infrastructure.

Support investments and initiatives in rural **broadband** to increase access and reliability, and as means to enable digital equity.

## Thriving Communities

### Address community issues in order to build thriving communities in which people want to work, live and learn.

**Housing Affordability and Supply** – support legislation that improves housing affordability, increases housing supply, and expands opportunities for housing at all income levels.

- Increase available workforce and attainable housing.

**Public Safety** – respond to the Blake decision by supporting clarification around the crime of possessing a controlled substance and revise the current system of two referrals prior to criminal charges.

- Clarify the ability for law enforcement to conduct vehicle pursuits using a reasonable suspicion standard in specific circumstances.

**Healthcare** – ensure choice in health care options, while safeguarding affordability and cost containment.

- Support efforts and funding on **workforce development, recruitment, and retention** to addressing severe challenges across all professions in healthcare.
  - Simplify professional accreditation process, while adhering to standards.
- **Behavioral Health** – create greater access to community based behavioral health services to include substance use disorder treatment and dual diagnosis treatment facilities.

**\*State Budget:** Support requests in the State Budget that benefit Snohomish County infrastructure, transportation, and community efforts in the priority areas.

**Questions?** Contact **Rashma Agarwal, Director of Government Relations**, for more information on Economic Alliance Snohomish County's 2023 Legislative Agenda.